

## 2/1 Temple Street Ashwood VIC

3 2 2

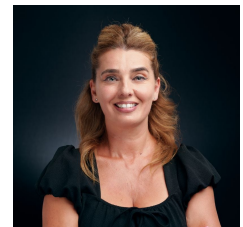
The entrance hallway leads to a separate lounge area, followed by a generous open-plan kitchen, meals, and living zone. The kitchen features gas cooking facilities and ample storage.

**Type** : Unit  
**View** : <https://www.zervasco.com.au/8555175>

All bedrooms include built-in robes, with the main bedroom boasting a walk-in robe and private ensuite. The central bathroom offers a separate shower, bathtub, vanity, and a separate toilet for convenience. A full laundry provides additional practicality.



**Chris Zervas**  
03 9544 4611



**Chrissy Savic**  
03 9544 4611

[For full version visit the website](https://www.zervasco.com.au)